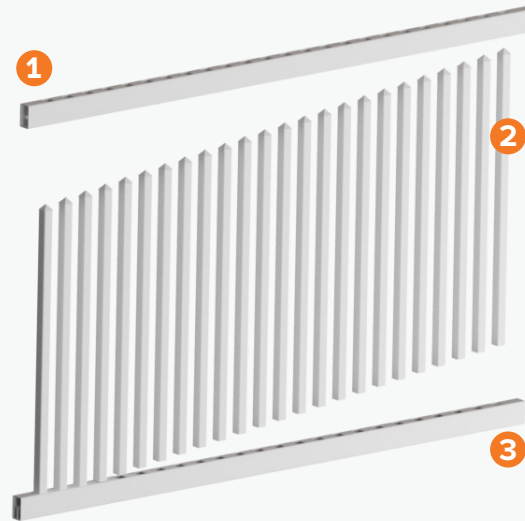


1200MM HIGH BAYSWATER PICKET FENCING & GATES

VIEW INSTALL
GUIDE PDF

Panel Kit Includes:

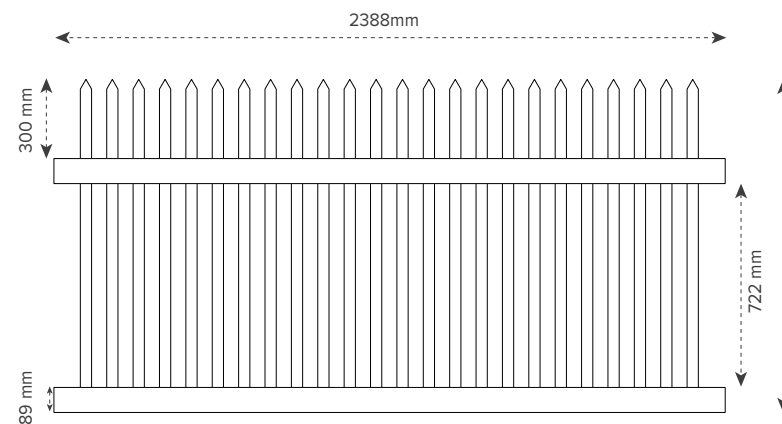
- 1 **Top Rail** - 2388mm* (w) x 89mm (h) x 51mm (d) - (1 of)
*Suits post centres of 2450mm
- 2 **Vertical Pickets*** - 38mm (w) x 1135mm (h) x 38mm (d) - (24 of)
- 3 **Bottom Rail** - 2388mm (w) x 89mm (h) x 51mm (d) - (1 of)
NB: Bottom Rail includes Aluminium strengthening insert for greater rigidity
*Slats are spaced at 56mm spacings



Bayswater Picket Panel Kit - 2388 x 1200mm

CODE: PVC600 | WEIGHT: 22.1kg

- » Easy assembly flat pack kit
- » Durable white UV stabilised PVC with titanium dioxide additives
- » Elegant 38 x 38mm straight pickets offering a classic colonial picket fence option with a more modern feel
- » 2388mm width to suit 2450mm posts centres
- » Panels can be cut down to suit smaller post centre requirements
- » Bottom Rail includes Aluminium strengthening insert for greater rigidity



Assembly Required

Kit includes all necessary components - top rail, vertical slats & bottom rail.

Refer to installation guide.

Bayswater Picket Gate - 1000 x 1200/1250mm

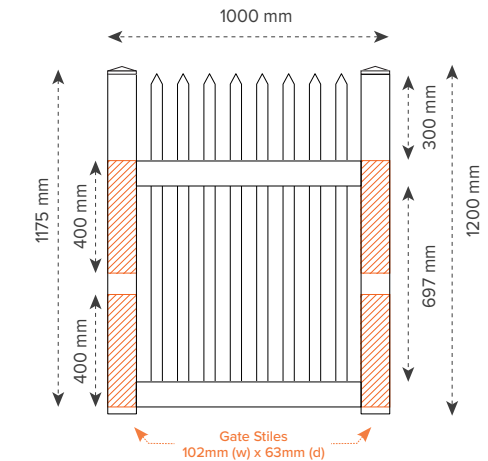
CODE: PVC650 | WEIGHT: 13.5kg

- » Fully assembled gate including 2 x gate stile caps
- » Aluminium reinforcing within stiles for hinge and latch placement
- » Durable white UV stabilised PVC with titanium dioxide additives
- » Elegant 38 x 38mm straight pickets offering a classic colonial picket fence option with a more modern feel



Fully Assembled Gate

Our fully assembled gate comes ready to use, with no assembly required & includes 400mm of aluminium re-inforcing within gate stiles for hinge and latch placement



Bayswater Picket Gate - 1500 x 1200/1250mm

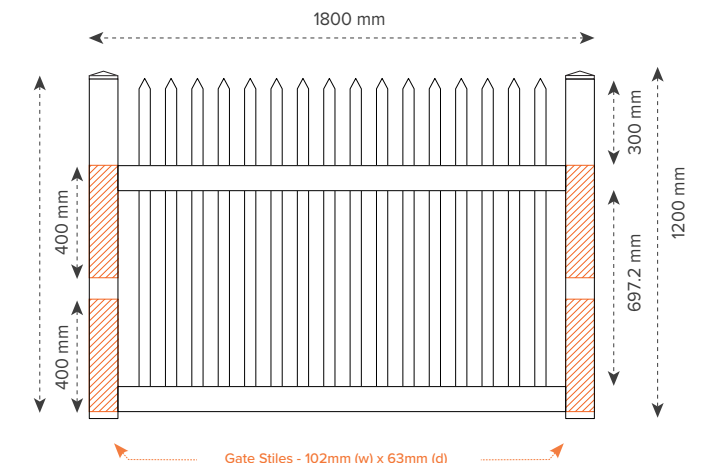
CODE: PVC660 | WEIGHT: 20.8kg

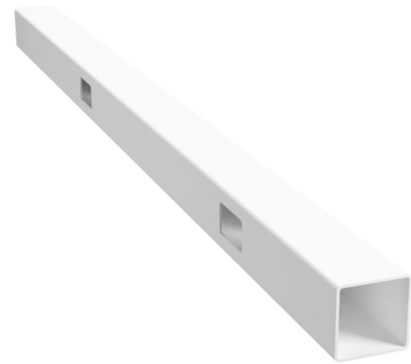
- » Fully assembled gate including 2 x gate stile caps
- » Aluminium reinforcing within stiles for hinge and latch placement
- » Durable white UV stabilised PVC with titanium dioxide additives
- » Elegant 38 x 38mm straight pickets offering a classic colonial picket fence option with a more modern feel



Fully Assembled Gate

Our fully assembled gate comes ready to use, with no assembly required & includes 400mm of aluminium re-inforcing within gate stiles for hinge and latch placement

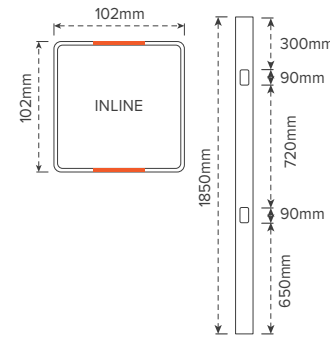




Inline Post - Picket Range

CODE: PVC405

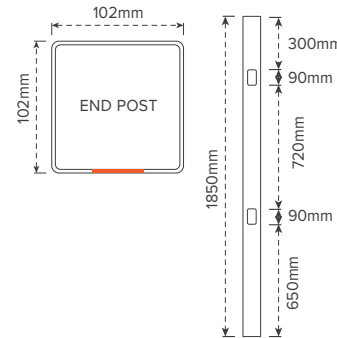
- » Inline post for straight fences
- » 1850mm Height x 102mm Width x 102mm Depth; Wall Thickness: 3.8mm
- » White UV Stabilised PVC with titanium dioxide additives for enhanced protection
- » Slotted holes on both sides for easy rail insertion
- » Top cap sold separately



End Post - Picket Range

CODE: PVC410

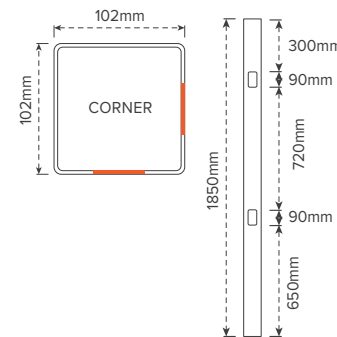
- » End post for start or end of runs
- » Suitable for use between stepping panels
- » 1850mm Height x 102mm Width x 102mm Depth; Wall Thickness: 3.8mm
- » White UV Stabilised PVC with titanium dioxide additives for enhanced protection
- » Slotted holes on one side for easy rail insertion
- » Top cap sold separately



Corner Post - Picket Range

CODE: PVC415

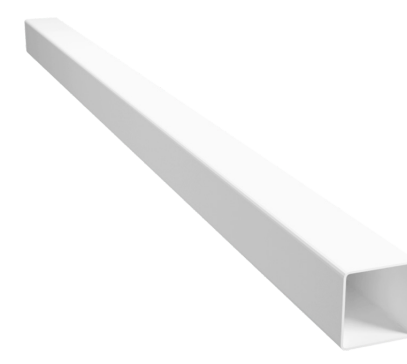
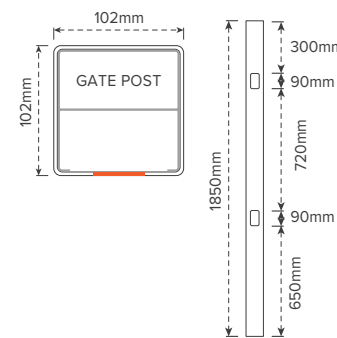
- » Corner post for 90° corner
- » 1850mm Height x 102mm Width x 102mm Depth; Wall Thickness: 3.8mm
- » White UV Stabilised PVC with titanium dioxide additives for enhanced protection
- » Slotted holes on both sides for easy rail insertion
- » Top cap sold separately



Gate Post - Picket Range

CODE: PVC470

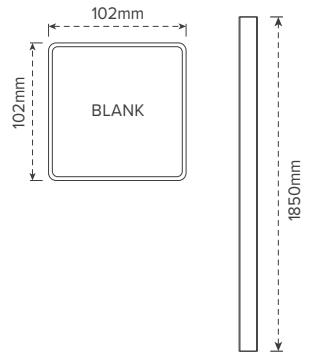
- » Includes internal 1.5mm thick aluminium insert entire length of post. Provides post rigidity and sturdy substrate for fixing of hinges & latches
- » 1850mm Height x 102mm Width x 102mm Depth; Wall Thickness: 3.8mm
- » White UV Stabilised PVC with titanium dioxide additives for enhanced protection
- » Slotted holes on one side for easy rail insertion
- » Top cap sold separately



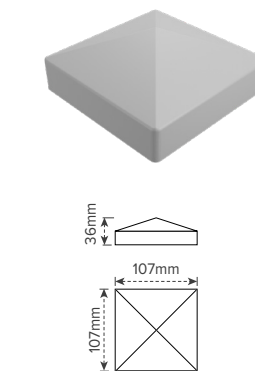
Blank Post - Picket Range

CODE: PVC420

- » Blank post for use with panel brackets
- » 1850mm Height x 102mm Width x 102mm Depth; Wall Thickness: 3.8mm
- » White UV Stabilised PVC with titanium dioxide additives for enhanced protection
- » Blank posts can be used in conjunction with rail brackets when panel to panel rails do not line up
- » Top cap sold separately



Post Accessories & Rail Brackets

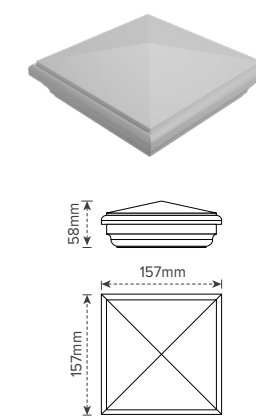


Slimline Post Cap

Suits 102 x 102mm Post

CODE: PVC905

- » Low Profile post caps
- » Suits 102 x 102mm Posts
- » Press on external fit cap
- » White UV Stabilised PVC with titanium dioxide additives for enhanced protection

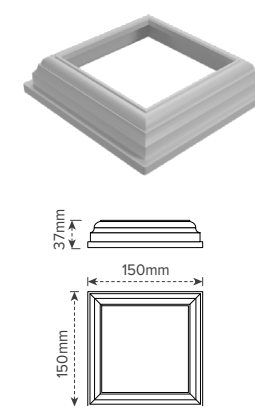


New England Post Cap

Suits 102 x 102mm Post

CODE: PVC915

- » Decorative Hamptons style post cap
- » Suits 102 x 102mm Posts
- » Press on external fit cap
- » White UV Stabilised PVC with titanium dioxide additives for enhanced protection

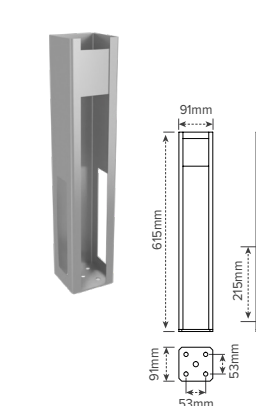


Decorative Cover Ring

Suits 102 x 102mm Post

CODE: PVC945

- » Decorative Hamptons style post cover ring
- » Suits 102 x 102mm Posts
- » Place on posts prior to installing panel kits
- » White UV Stabilised PVC with titanium dioxide additives for enhanced protection

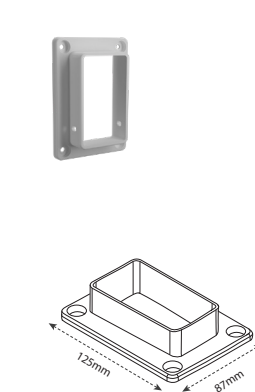


Concealed Base Plate

Suits 102 x 102mm Post

CODE: PVC955

- » Internal fitting base plate suits End, Inline & Corner posts. Not suitable for use with Gate Posts
- » 6mm thick base plate with 2mm thick vertical walls
- » Cold-galvanized steel providing strong corrosion resistance
- » Not recommended for use in high wind load areas



PVC Rail Bracket

Suits 51 x 89mm Rail

CODE: PVC930

- » Suitable for use when affixing rails to walls or in combo with PVC end posts when stepping of panels is required.
- » White UV Stabilised PVC with titanium dioxide additives for enhanced protection
- » Fixings for screwing brackets to post or wall not supplied